

The MIPIM logo is centered in the upper half of the page. It features the word "mipim" in a white, lowercase, sans-serif font. A registered trademark symbol (®) is located to the upper right of the letter "m". The text is superimposed on a background image of a modern building interior with a large glass facade and a curved architectural element. This background is framed by a thick, stylized border composed of interlocking geometric shapes in blue, green, and orange.

# mipim®

## **\ AGENDA 2023**

# CONFERENCES & EVENTS PROGRAMME

Built by



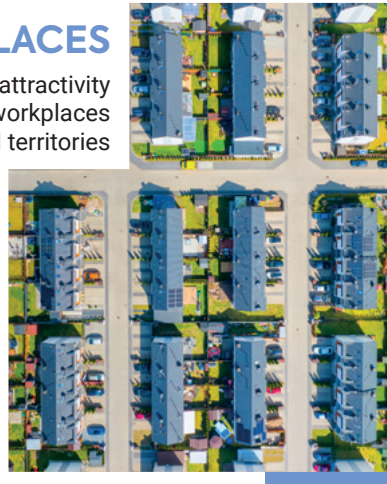
In the business of  
building businesses

# MIPIM INFLUENCES AND ACCELERATES THE TRANSFORMATION OF THE BUILT ENVIRONMENT

---

## BETTER PLACES

Improving the attractiveness of assets, workplaces and territories



In crafting a unique urban festival during 4 days in Cannes, MIPIM influences and accelerates the transformation of the built environment.

MIPIM is a catalyst for concrete solutions combining face to face discussions, thought leadership, development opportunities and global capital to drive change.

We connect and inspire the international real estate community to create more sustainable, liveable and prosperous places for all.

Our conferences programme has been developed with the support of Real Estate Balance to improve diversity and representation across the programme.

## GREATER IMPACT

Improving real estate sustainability



## STRONGER BUSINESS

Improving real estate efficiency  
(management, transactions, marketing...)

# CONFERENCE & EVENT SPONSORS

## RE-INVEST

PLATINUM SPONSOR



GOLD SPONSORS



DINNER SPONSOR



## CONFERENCE' SPONSORS AND PARTNERS



## ROAD TO ZERO CARBON

GOLD SPONSORS



## HEALTHCARE GLOBAL SPONSOR



## VIP LOUNGE SPONSOR



## AWARDS' SPONSORS



# SPEAKERS



CRISTINA GAMBOA  
CEO  
WORLD GREEN BUILDING COUNCIL

Realising the 'S' in ESG



DIANE HOSKINS  
Co-CEO  
GENSLER

Reenergising cities for the future



SANMI ADEGOKE  
CEO  
REHOBOTH PROPERTY INTERNATIONAL



MICHELE CECCHINI  
Head of Public Health  
OECD



COURTNEY FINGAR  
Editor-in-chief  
INVESTMENT MONITOR



JOHN GLADSTONE  
Head of Healthcare Investment,  
International Capital Markets EMEA  
JLL



GHISLAINE HALPENNY  
Director of ESG & Corporate Affairs  
REGAL LONDON



SCOTT LEIBOLD  
EVP and Global Head of  
Purchasing & Property  
RELX



CHRISTOS MISAILIDIS  
Chief Strategic Partnerships Officer  
BLUEGROUND



TIM MOONEN  
Managing Director  
THE BUSINESS OF CITIES



JOHN O'DRISCOLL  
Global Co-Head Real Estate  
AXA IM ALTS



TIMOTHÉE RAULY  
Global Co-Head Real Estate  
AXA IM ALTS



JACK RENTERIA  
Director of Living Concepts  
ALFA DEVELOPMENT



NEIL SLATER  
Global Head of Real Assets  
ABRDN



ALESSANDRO SPARACO  
Founding Partner  
THREESTONES CAPITAL S.A.



CHRIS STAVELEY  
Head of EMEA Office  
International Capital Markets, EMEA  
JLL



Dr. THOMAS STEINMÜLLER  
Representant  
AFILOG INTERNATIONAL  
c/o CAPTEN AG

6 STAGES



THE LEADERS' PERSPECTIVE STAGE	ASSET CLASS STAGE	INFRASTRUCTURE STAGE	GEO FOCUS STAGE	ROAD TO ZERO CARBON STAGE	MAKE IT HAPPEN STAGE
<p>This is where inspirational leaders come and share their story and their perspectives, in an intimate setting</p>	<p>From office to residential, from healthcare to logistics and hospitality... Be sharp!</p>	<p>Let's dig into the state of adjacent industries (energy, transport, water, waste, culture, data centres...) and their impact on real estate</p>	<p>A deep dive into local markets, various formats to gain insights as well as new connections</p>	<p>Be pragmatic! No buzz, no dreams, just the most pragmatic approach to industry challenges.</p>	<p>How did you do this? Use cases, return on experience and collaboration stories take the stage here.</p>
				<div>Gold sponsor</div> <div>Life Is On   Schneider Electric</div>	



MONDAY 13 MARCH \EVENTS

13.00 - 22.00

TBD

The Co-Living Summit

16.00 - 22.00

Carlton Stage

The RE-Invest Opening & Evening Dinner

CLOSED-DOOR EVENT  
by invitation only<sup>1</sup>

18.00 - 22.00

TBD

The Logistics Pre-Opening Drinks Event

CLOSED-DOOR EVENT  
by invitation only<sup>1</sup>

Platinum sponsor

Gold sponsors

Dinner sponsor

Investment Managers

CMS low-tax-future

PATRIZIA

REDEVCO

PARIS LA DÉFENSE

TUESDAY 14 MARCH \MORNING

08.00 - 12.30

Carlton Stage

The RE-Invest Summit

12.30 - 14.00

Carlton Stage

RE-Invest Thought Leaders' Lunch

CLOSED-DOOR EVENT  
by invitation only<sup>1</sup>

Platinum sponsor

Gold sponsors

Investment Managers

CMS low-tax-future

PATRIZIA

REDEVCO

Platinum sponsor

Gold sponsors

Investment Managers

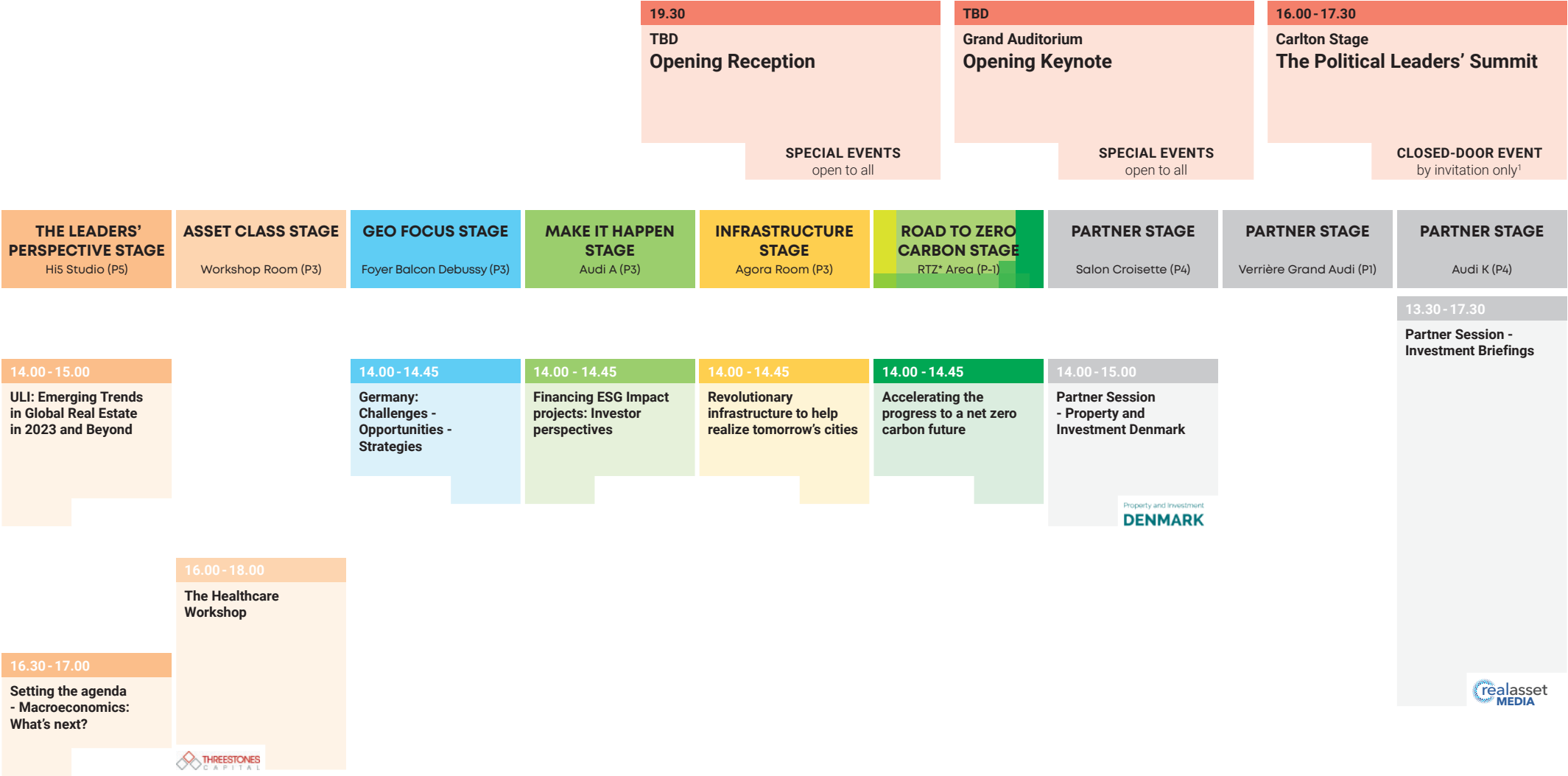
CMS low-tax-future

PATRIZIA






REDEVCO



TUESDAY 14 MARCH \ MORNING & AFTERNOON



# WEDNESDAY 15 MARCH MORNING & AFTERNOON

						<b>12.15 - 14.00</b> <b>TBD Outside Palais</b> <b>Forum des élus - Lunch</b>	
						<b>CLOSED-DOOR EVENT</b> by invitation only <sup>1</sup>	
THE LEADERS' PERSPECTIVE STAGE Hi5 Studio (P5)	ASSET CLASS STAGE Workshop Room (P3)	GEO FOCUS STAGE Foyer Balcon Debussy (P3)	MAKE IT HAPPEN STAGE Audi A (P3)	INFRASTRUCTURE STAGE Agora Room (P3)	ROAD TO ZERO CARBON STAGE RTZ* Area (P-1)	PARTNER STAGE Salon Croisette (P4)	PARTNER STAGE Verrière Grand Audi (P1)
<b>10.15 - 10.45</b> Reenergising cities for the future	<b>10.30 - 13.00</b> The Residential Workshop	<b>09.45 - 10.30</b> Focus on Japan	<b>10.00 - 10.45</b> Partnerships enabling early regeneration through impact projects	<b>10.00 - 10.45</b> Energy crisis disrupting the real estate: industry impact and stakeholders agility	<b>10.00 - 10.45</b> Decarbonizing energy infrastructure and investing in low carbon technologies	<b>08.45 - 10.00</b> Partner Session - Business Iceland 	
		<b>11.00 - 13.30</b> CEE: Challenges - Opportunities - Strategies	<b>11.15 - 12.45</b> Partner session - Chiomenti 	<b>11.30 - 12.15</b> Transport: Bridging the E, the S, and the G with mobility	<b>11.30 - 12.15</b> How to implement smart urban tech solutions to develop sustainable cities	<b>11.00 - 12.00</b> Partner Session - Hub Brussels 	<b>11.00 - 16.30</b> Forum des élus
<b>11.30 - 12.00</b> Businesses role in advancing UN SDG 16	Sponsored by 	<b>14.00 - 16.30</b> US: Challenges - Opportunities - Strategies	<b>14.00 - 14.45</b> Simple solutions to adapt cities to heat waves	<b>14.00 - 14.45</b> Waste vs Reuse: Real estate's role in boosting the circular economy	<b>14.00 - 14.45</b> Increasing biodiversity in urban areas		<b>CLOSED-DOOR EVENTS</b> by invitation only
<b>14.00 - 14.30</b> Realising the 'E' in ESG			<b>15.15 - 16.00</b> Realising affordable and sustainable housing	<b>15.15 - 16.00</b> Water: Increasing cities and buildings' resilience to scarcity and heatwaves	<b>15.30 - 16.15</b> Sustainable retrofitting		
<b>15.00 - 15.30</b> Realising the 'S' in ESG	<b>17.15 - 19.15</b> Women's networking event		<b>16.45 - 17.30</b> Fostering community and inclusion through urbanism			<b>17.15 - 18.15</b> Partner Session - Barcelona Catalonia 	
<b>16.00 - 16.30</b> What cities of the future will look like							
<b>17.00 - 18.30</b> Partner Session - ITA ICE							



THURSDAY 16 MARCH \ MORNING & AFTERNOON

